

CIFASD Standardized Ovine Facial Measures:

Spreading Calipers

- 1 Minimal Frontal Width
- 2 Bitragal Width
- 3 Bigonial Width
- 4 Outer Canthal Width

Sliding Calipers

- 5 Philtrum Length
- 6 Nasal Length
- 7 Nasal Bridge Length
- 8 Lower Facial Height
- 9 Nasal Width
- 10 Inner Canthal Width

11 Left Ear Length

13 Right Ear Length

12 Left Palpebral Fissure Width

14 Right Palpebral Fissure Width

Spreading Calipers

15 Left Upper Facial Depth

18 Right Upper Facial Depth

16 Left Mid-Facial Depth

19 Right Mid-Facial Depth

17 Left Lower Facial Depth

20 Right Lower Facial Depth

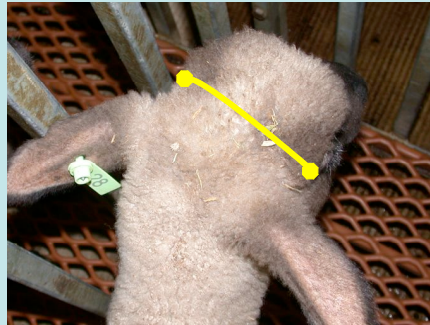
Instructions:

- 1) Use recommended calipers, to the extent feasible
- 2) Obtain and record values for all 20 measures
- 3) Repeat measurements, record values
- 4) If both values for a given measure do not differ by >2 mm, use 1st value obtained; otherwise, re-measure and use either of first two values that is closest to the third value

Spreading Calipers

1) Minimal Frontal Width

Find prominence of lateral fronto-temporal junction, measure from notch between prominence and caudal orbit. Measure from above, across top of head.



2) Bitragal Width

Find prominence of zygomatic process, follow caudally to furthest extent palpable, to base of ear. Measure from above, across top of head.



3) Bigonial Width

From the front, measure widest distance between lateral aspects of postero-ventral mandible.

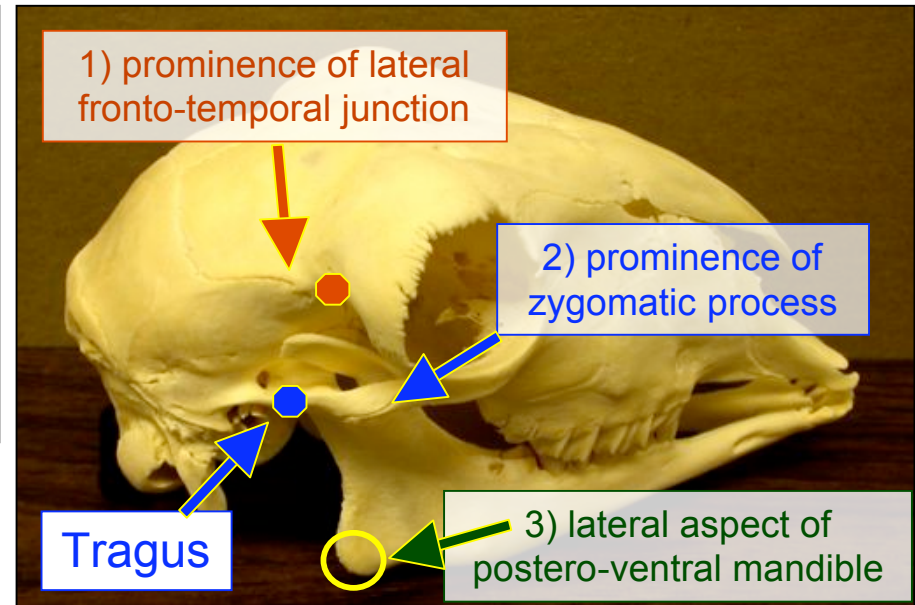


1) prominence of lateral fronto-temporal junction

2) prominence of zygomatic process

Tragus

3) lateral aspect of postero-ventral mandible



4) Outer Canthal Width

For each eye locate caudal point at which upper and lower eyelids fuse; measure across from front / above.



Sliding Calipers

5) Philtrum Length

Distance between dorsal and ventral extent of philtrum



Dorsal philtrum- point at which smooth, pebbly nasal tissue meets hairline of upper lip

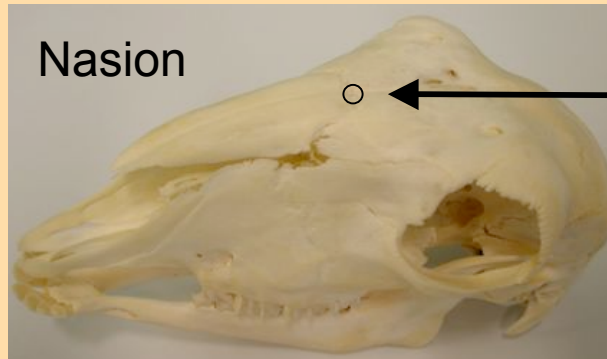
Ventral philtrum- top of inverted V-shaped notch

6) Nasal Length

Nasion to dorsal philtrum



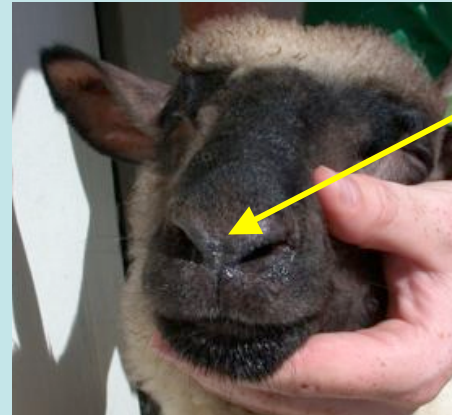
Nasion



Nasion- centerline concavity at junction of frontal and nasal bones

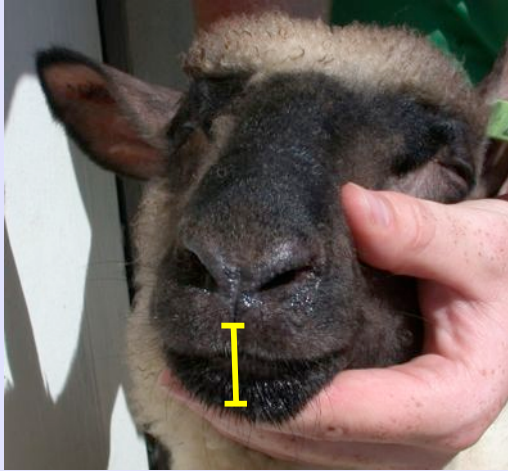
7) Nasal Bridge Length

Nasion to anterior tip of nose

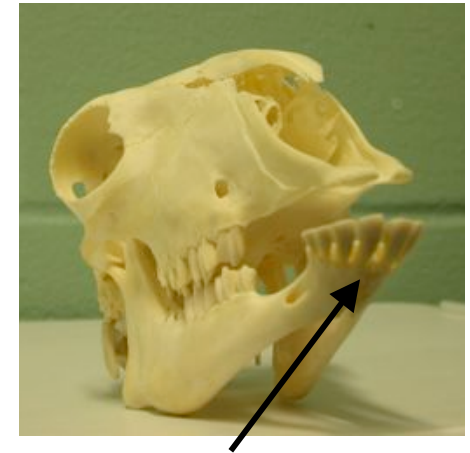


Anterior tip of nose- point on centerline where hairline of nasal bridge meets smooth nasal tissue

Sliding Calipers



8) Lower Facial Height
Upper philtrum to mandibular symphysis

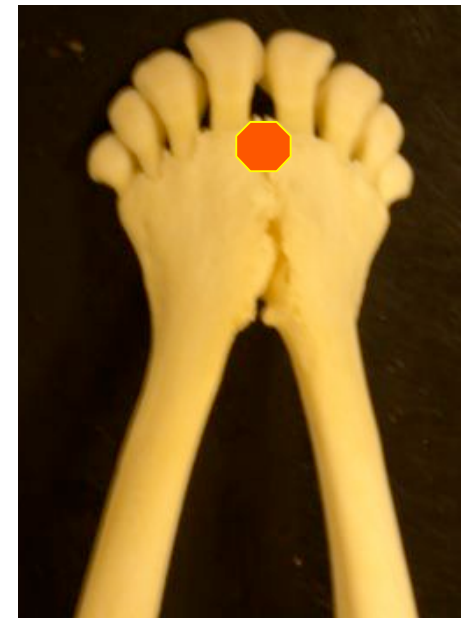
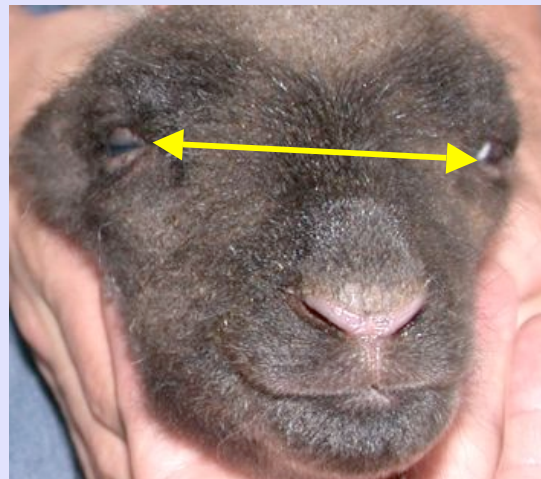


Mandibular symphysis-
centerline point where
bones of lower mandible
fuse, immediately
postero-ventral to teeth

9) Nasal Width
Distance between lateral borders

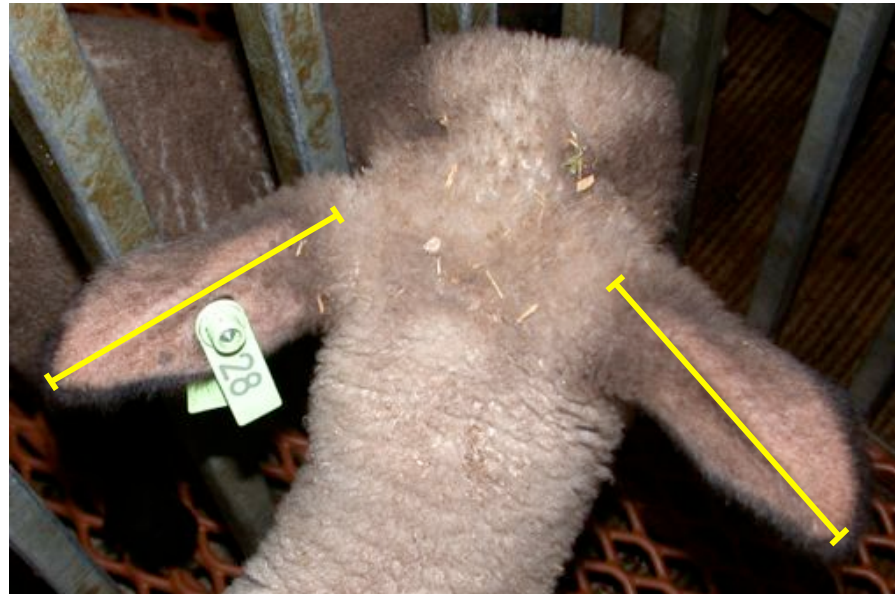


10) Inner Canthal Width
Distance between rostral points at
which upper and lower eyelids fuse



Sliding Calipers

11) Left Ear Length

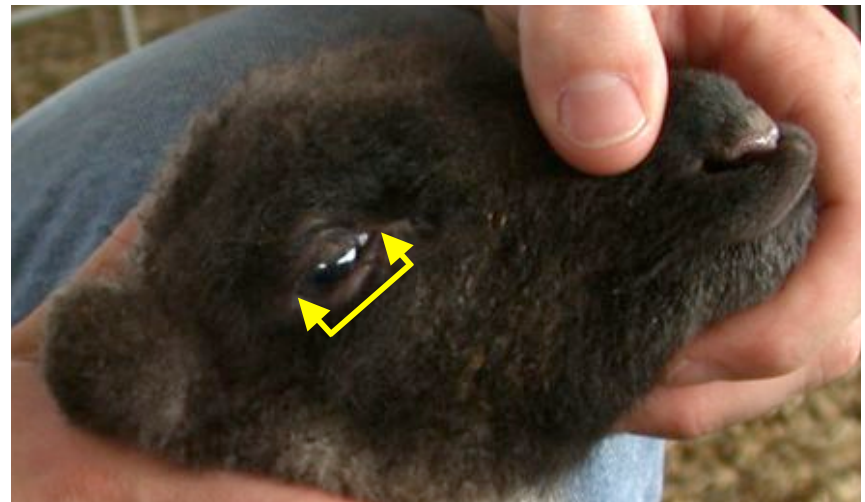


13) Right Ear Length

12) Left Palpebral Fissure Width



14) Right Palpebral Fissure Width



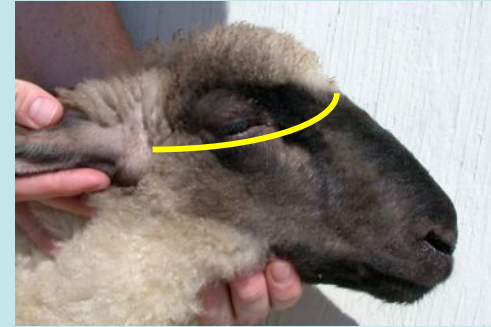
Spreading Calipers

15) Left Upper Facial Depth



Tragus to nasion

18) Right Upper Facial Depth



16) Left Mid-Facial Depth



Tragus to upper philtrum

19) Right Mid-Facial Depth



17) Left Lower Facial Depth



Tragus to mandibular symphysis

20) Right Lower Facial Depth

